



**HKFYG Regatta 2025
4 & 5 October 2025
Stanley, Hong Kong**

SAILING INSTRUCTIONS

The notation '[NP]' in a rule in the Sailing Instructions (SIs) means that a breach of this rule will not be grounds for a protest or request for redress by a boat. This changes RRS 60.1 & 61.1(a).

1 RULES

The event is governed by the rules defined in the Racing Rules of Sailing (RRS) and as detailed in Notice of Race (NoR) 1.

2 CHANGES TO SAILING INSTRUCTIONS

Any change to the SIs will be posted before 09:00 on the day it will take effect, except that any change to the schedule of races will be posted by 19:00 on the day before it will take effect.

3 COMMUNICATIONS WITH COMPETITORS

- 3.1 As per NoR 3, notices to competitors will be posted on the online official notice board (ONB).



Official Notice Board (ONB)

<https://padlet.com/hkfygsotc/breakout-room/nRxeqrnZAx7pq56P-oAdpz2J2j5GLz10R>

- 3.2 The race office is located at the outdoor reception booth, the front gate of Jockey Club Stanley Outdoor Training Camp (SOTC).

4 CODE OF CONDUCT

[DP] Competitors and support persons shall comply with reasonable requests from race officials.

5 SIGNALS MADE ASHORE

- 5.1 Signals made ashore will be displayed on the flagpole located in front of SOTC entrance, and may be repeated on the ONB.
- 5.2 When flag AP is displayed ashore, '1 minute' is replaced with 'not less than 30 minutes' in Race Signals AP.
- 5.3 [DP] Flag D with one sound means 'Boats shall not leave the assigned parking area until this signal is made. The warning signal will not be made before the scheduled time or less than 30 minutes after flag D is displayed.'

6 SCHEDULE OF RACES

- 6.1 The regatta schedule is as follows:



		Date & Time	
	Location	Oct 4	Oct 5
Registration For all fleets	Reception booth at the entrance of SOTC	08:30-09:30	
Coaches Briefing	Sea Cadet Corps Jubilee Centre	09:00	
JC Fleets sailors briefing	Sea Cadet Corps Jubilee Centre	09:30	
First Warning Signal (Optimist Open Fleet only)		10:55	
Prize giving	Sea Cadet Corps Jubilee Centre	/	16:00

- 6.2 One extra race per day may be sailed subject to weather conditions and at the discretion of the Race Officer.
- 6.3 To alert boats that a race or sequence of races will begin soon, the orange starting line flag will be displayed with one sound at least five minutes before a warning signal is made.
- 6.4 On Sunday, 5 October 2025, no warning signal will be made after 1400hrs.

7 RACING AREAS AND CLASS FLAGS

- 7.1 Class (fleets) flags are:

Racing Area	Fleet	International Code Flag / Coloured Flag
A	Optimist JC Fleet	G
B	Pico JC Fleet	J
C	Optimist Open Fleet	T

- 7.2 Optimist JC Fleet sailors will be given a green ribbon upon registration. The ribbon shall be flown from the top of the sprit of boats.
- 7.3 Races will be held in three racing areas. Addendum A shows the approximate location of the racing areas.

8 COURSES

The diagrams in Addendum B show the courses, including the course designation, the order in which marks are to be passed, and the side on which each mark is to be left.

9 MARKS

Marks are described in Addendum B.

10 THE START

- 10.1 The starting line is between the staff displaying an orange flag on the committee vessel at the starboard end and the course side of the port-end starting mark.

- 10.2 A boat that does not start within FOUR minute in Open Fleet or SIX minutes in JC Fleet after her starting signal will be scored Did Not Start without a hearing.

11 CHANGE OF THE NEXT LEG OF THE COURSE

To change the next leg of the course, the race committee will move the original mark or the finishing line to a new position.

12 THE FINISH

- 12.1 The finishing line is between the staff displaying a blue flag on the committee vessel at the starboard end and the course side of the port-end finishing mark.
- 12.2 [DP][NP] If the race committee is absent when a boat finishes, she shall report her finishing time, and her position in relation to nearby boats, to the race committee at the first reasonable opportunity.

13 PENALTY SYSTEM

RRS Appendix P applies.

14 TARGET TIMES AND FINISHING WINDOW

- 14.1 The Target Times and the Finishing Window are shown in the table below.

	Target Time	Finishing Window
Optimist Open Fleet	40	15 min
Optimist JC Fleet	30	20 min
Pico JC Fleet	30	20 min

- 14.2 The Finishing Window is the time for boats to finish after the first boat sails the course. Boats failing to sail the course within the Finishing Window will be scored Did Not Finish (DNF) without a hearing.
- 14.3 Failure to meet the Target Time will not be grounds for redress. This changes RRS 61.1(a).
- ## 15 HEARING REQUESTS
- 15.1 For each fleet, the protest time limit is 45 minutes after the last boat in the fleet has finished the last race of the day or the race committee signals no more racing today, whichever is later. The time will be posted on the official notice board.
- 15.2 Hearing request forms are available from the race office. Protests and requests for redress or reopening shall be delivered there within the appropriate time limit.
- 15.3 Notices will be posted no later than 15 minutes after the protest time limit to inform competitors of hearings in which they are parties or named as witnesses. Hearings will be held in the protest room, located on the 2/F of the SOTC, beginning at the time posted, which maybe before the expiry of the protest time limit.
- 15.4 A list of boats that have been penalized for breaking RRS 42 under Appendix P will be posted.

16 SAFETY REGULATIONS [NP][DP]

- 16.1 Check-out and Check-in Procedures: Mandatory sign out/in. All sailors shall sign out before leaving the shore and sign in as soon as practicable after returning to shore at the completion of racing on both days of the event, failing which they may be scored a DSQ for all races held on that particular day, without a protest hearing.



- 16.2 The sign out/in sheet will be located at the reception booth outside the entrance of SOTC.
- 16.3 No competitor shall leave the race area prior to the end of that day's racing without the permission of the Race Committee.
- 16.4 A boat that retires from a race shall notify the race committee at the first reasonable opportunity.

17 EQUIPMENT CHECKS [NP][DP]

- 17.1 A boat or equipment may be inspected at any time for compliance with the class rules, notice of race and sailing instructions.
- 17.2 When instructed by a race official on the water, a boat shall proceed to a designated area for inspection.

18 SUPPLIED BOATS

- 18.1 Boats will be supplied by the organizing authority for the JC Fleets. See Addendum C.

19 OFFICIAL VESSELS

Official vessels will be identified as follows:

Vessel	Flag
Race Committee	White flag with black "RC" text
Jury	White flag with black "JURY" text
Safety	White flag with green "SAFETY" text

20 [DP] SUPPORT TEAMS (APPLIES TO OPTIMIST OPEN FLEET ONLY)

- 20.1 Support teams, including all support persons and support person vessels, shall comply with the support team regulations in SI Addendum D.
- 20.2 Team leaders, coaches and other support persons shall stay outside areas where boats are racing from the time of the preparatory signal for the first start until all boats have finished or retired or the race committee signals a postponement, general recall or abandonment.

21 TRASH DISPOSAL

Trash may be placed aboard official or support person vessels.

22 BERTHING

[DP] Boats shall be kept in their assigned places while in the boat park.

23 RISK STATEMENT

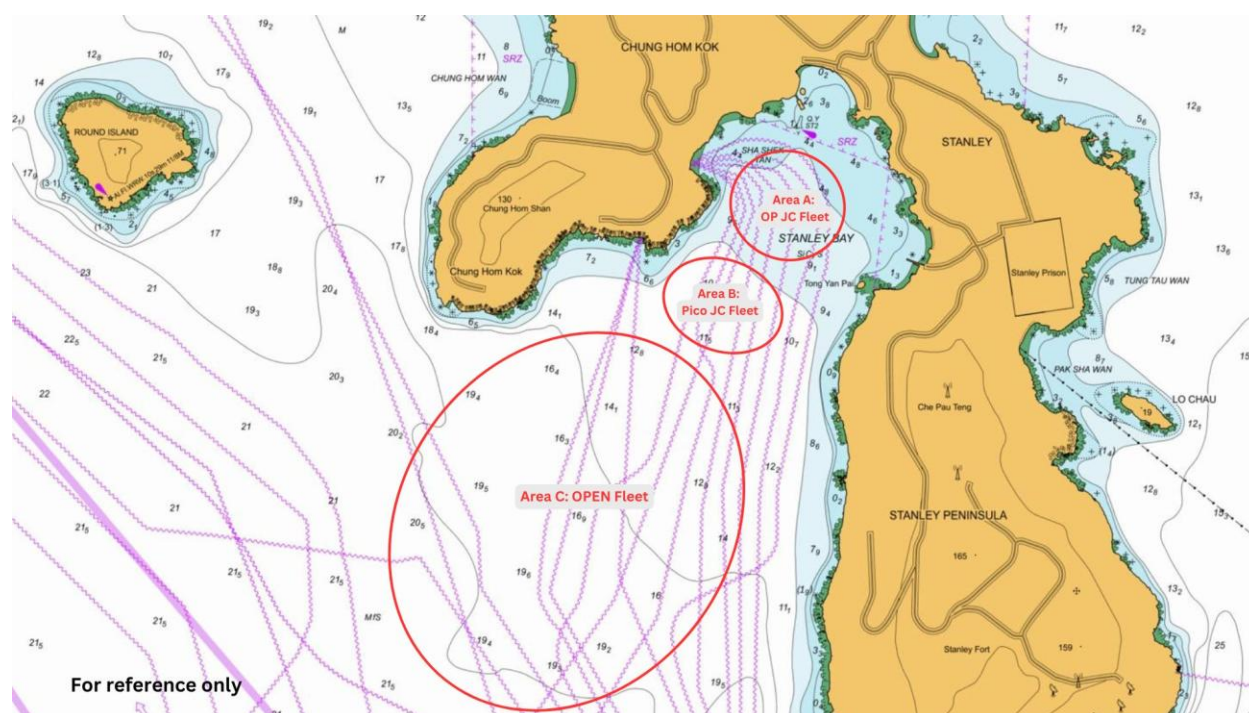
- 23.1 RRS 3 states: 'The responsibility for a boat's decision to participate in a race or to continue to race is hers alone.' By participating in this event each competitor agrees and acknowledges that sailing is a potentially dangerous activity with inherent risks. These risks include strong winds and rough seas, sudden changes in weather, failure of equipment, boat handling errors, poor seamanship by other boats, loss of balance on an unstable platform and fatigue resulting in increased risk of injury. **Inherent in the sport of sailing is the risk of permanent, catastrophic injury or death by drowning, trauma, hypothermia or other causes.**
- 23.2 The race committee, the protest committee, the organizing authority, the co-organizers, the sponsors and their employees will not accept any liability for material damage or personal injury or death sustained in conjunction with or prior to, during, or after the event.

24. PRIZES

Prizes will be given as follows:

- 24.1 Optimist (Open Fleet & JC Fleet)
 - 24.1.1 Overall 1st, 2nd & 3rd
 - 24.1.2 Boy 1st, 2nd & 3rd, 4th & 5th
 - 24.1.3 Girl 1st, 2nd & 3rd
- 24.2 Laser Pico (JC Fleet)
 - 24.2.1 Overall 1st, 2nd & 3rd, 4th & 5th

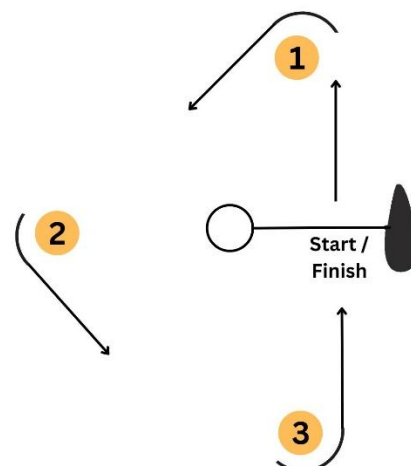
ADDENDUM A - APPROXIMATE LOCATION OF RACING AREAS



ADDENDUM B - COURSES

For Optimist JC Fleet & Pico JC Fleet

Course no.	Mark Rounding Order
G1	Start – 1 – 2 – 3 – Finish
G2	Start – 1 – 2 – 3 – Start/Finish – 1 – 3 – Finish

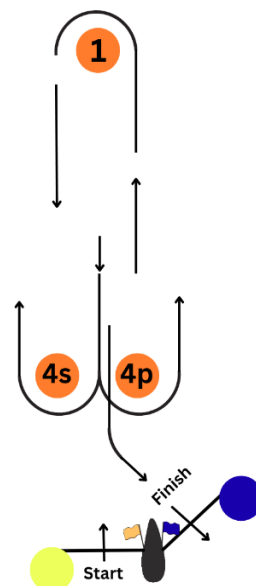


Notes:

1. Marks 1, 2 and 3 are orange inflatable buoys which shall be rounded to port.
2. The starting marks are a race committee vessel at the starboard end of the line and a white inflatable buoy at the port end.
3. The finishing marks are a race committee vessel at the starboard end of the line and a white inflatable buoy at the port end.
4. For Course G2, at 'Start/Finish' boats shall sail between the race committee vessel at the starboard end of the line and the white inflatable buoy at the port end.

For Optimist Open Fleet

Course no.	Mark Rounding Order
L1	Start – 1 – 4p – Finish
L2	Start – 1 – 4s/4p – 1 – 4p - Finish
L3	Start – 1 – 4s/4p – 1 – 4s/4p – 1 - 4p - Finish



Notes:

1. Mark 1 is an orange inflatable buoy which shall be rounded to port.
2. Gate marks 4s and 4p are orange inflatable buoys. At the gate, boats shall pass between the marks and round either mark. The gate may be replaced by a single mark which shall be rounded to port.
3. The starting marks are a race committee vessel at the starboard end of the line and a yellow inflatable buoy at the port end.
4. The finishing marks are a race committee vessel at the starboard end of the line and a blue inflatable buoy at the port end.



ADDENDUM C - BOATS SUPPLIED BY THE ORGANIZING AUTHORITY

- C1.1** Boats will be supplied for competitors of Optimist JC Fleet and Pico JC Fleet, who shall not modify them or cause them to be modified in any way except that
- (a) a compass may be tied or taped to the hull or spars;
 - (b) wind indicators, including yarn or thread, may be tied or taped anywhere on the boat;
 - (c) hulls, centreboards and rudders may be cleaned, but only with water;
 - (d) adhesive tape may be used anywhere above the water line; and
 - (e) all fittings or equipment designed to be adjusted may be adjusted, provided that the class rules are complied with.
- C1.2** All equipment supplied with the boat for sailing purposes shall be in the boat while afloat.
- C1.3** The penalty for not complying with one of the above instructions is disqualification from all races sailed in which the instruction was broken.
- C1.4** Competitors shall report any damage or loss of equipment, however slight, to the organizing authority's representative immediately after securing the boat ashore. The penalty for breaking this instruction, unless the protest committee is satisfied that the competitor made a determined effort to comply, is disqualification from the race most recently sailed.
- C1.5** Class rules requiring competitors to be members of the class association do not apply.



ADDENDUM D – SUPPORT TEAM (APPLIES TO OPTIMIST OPEN FLEET ONLY)

Note: All support boat personnel are reminded that this Addendum forms a part of the Sailing Instructions. You are also reminded that breaches of Sailing Instructions by persons on a support boat could impact on the sailing results of sailors associated with your support boat.

The OA may change these regulations at any time. Any changes will be posted on ONB.

1. General

- 1.1 Support boats shall display identification of the club they represent.
- 1.2 Under all circumstances coaches and other support boats are expected to assist any boat in distress.
- 1.3 All support persons shall wear a suitable PFD while afloat and the driver shall attach a suitable kill cord while the engine is on.

2. Support Team Vessels Zone

- 2.1 Except when requested to participate in rescue operations, team leaders, coaches, parents and other support persons shall stay outside areas where boats are racing, from the time of the preparatory signal for the first fleet of a race to start until all boats have finished or the Race Committee signals a postponement or abandonment (but not a General Recall) of all fleets.
- 2.2 The areas the boats are racing in is defined as the area inside the course and within 100 metres of any mark, lay line, starting line, finishing line or any area where any boat that is racing is sailing or may sail. During any starting sequence, support vessels in the vicinity of the start line shall stay at least 100 metres below the starting line and its extensions. No vessel shall be in line with the extension of the transit from starting vessel to the starting pin Race Committee Vessel.
- 2.3 When a Race Committee or Protest Committee member indicates a support vessel to move further from the course area, the mentioned vessel shall do so immediately.
- 2.4 When the wind is less than 10 knots support vessels shall not exceed 5 knots within 500 metres of the area where boats are racing. At other times vessels that are motoring above 5 knots shall remain at least 150 metres from any boat racing.

3. Kill Cords Use

- 3.1 First Breach:
When the race committee, from its own observation or from information received from any source, believes that a support person has broken SI Addendum D1.3 for the first time, it shall issue a written warning to that person and post that warning on the ONB.
- 3.2 Second and Subsequent Breaches:
When the race committee believes that a support person has broken SI Addendum D1.3 for a second or subsequent time, the race committee shall report to the protest committee requesting action under RRS62.1.
- 3.3 When the protest committee acts in accordance with SI Addendum D3.2 and RRS 62.1 and decides that a support person has repeatedly broken a rule, it shall penalise a boat that is a party to that hearing as per SI Addendum D3. The penalty shall be a scoring penalty of not less than 50% calculated per RRS44.3(c). This changes RRS 62.4(b).